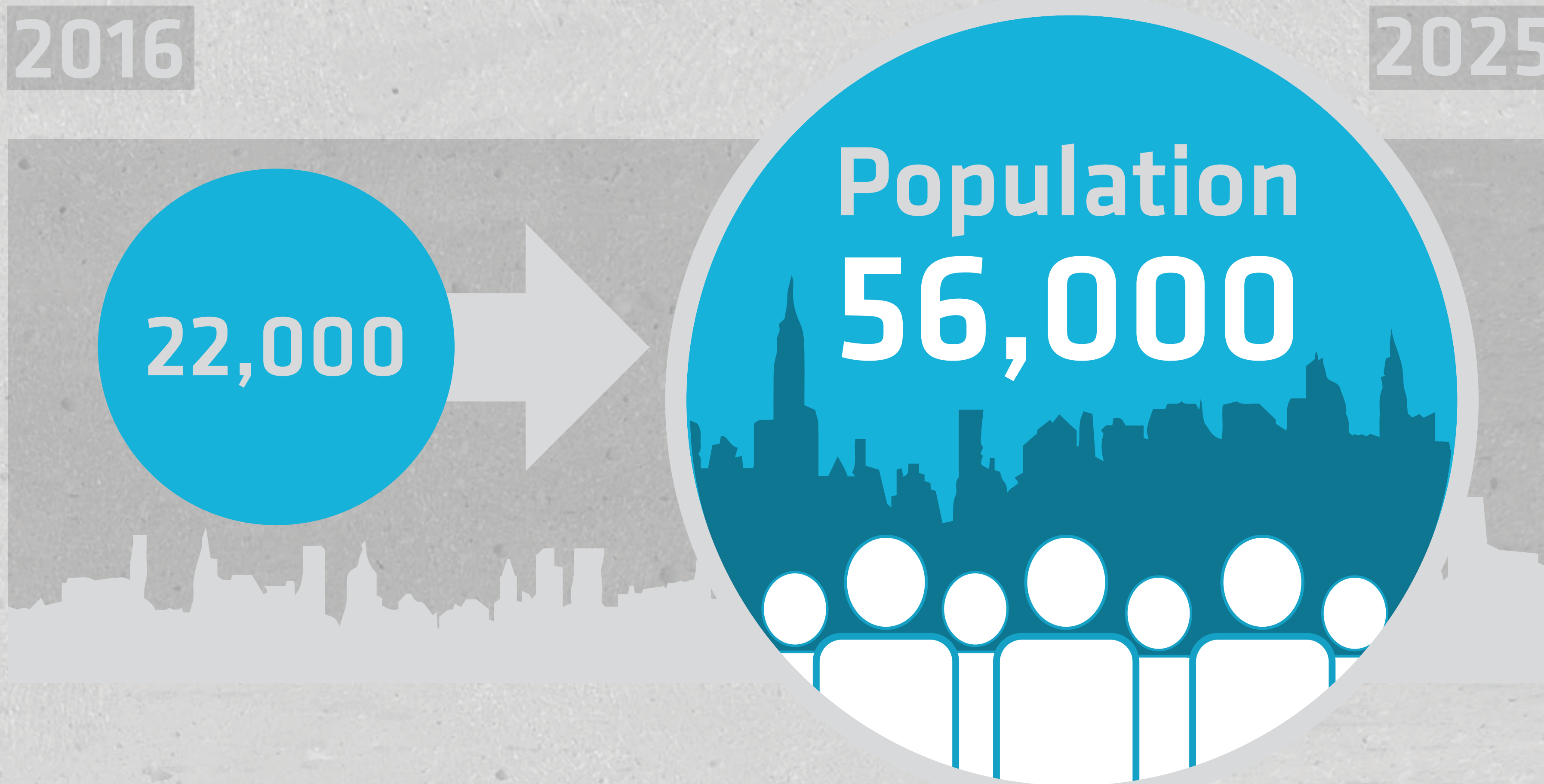


INFRASTRUCTURE ANALYSIS

The impact of Downtown Brooklyn's projected population growth



**EACH INFRASTRUCTURE CATEGORY FALLS
INTO ONE OF THREE STRAIN LEVELS**



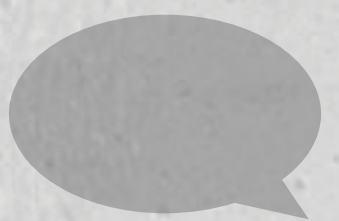
Demand projected to significantly strain current and known planned capacity and/or significant quality issues expected by 2025.

SIGNIFICANT STRAIN



Demand projected to moderately strain current and known planned capacity and/or moderate quality issues expected by 2025.

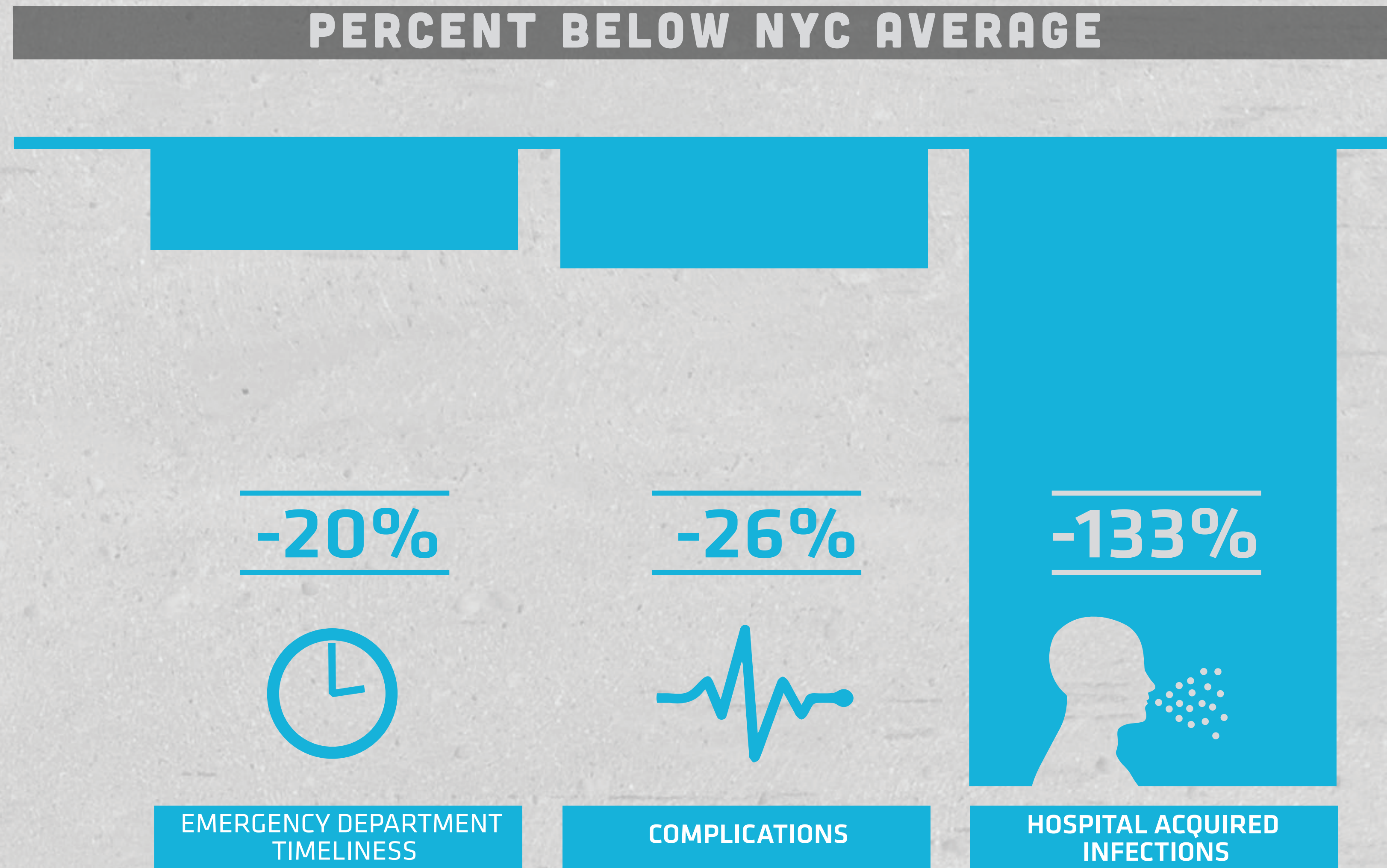
MANAGEABLE STRAIN



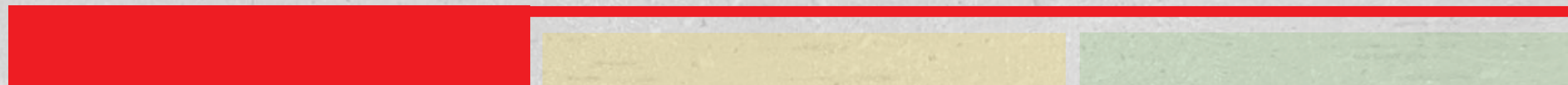
No capacity gap expected.

NO STRAIN

HOSPITALS

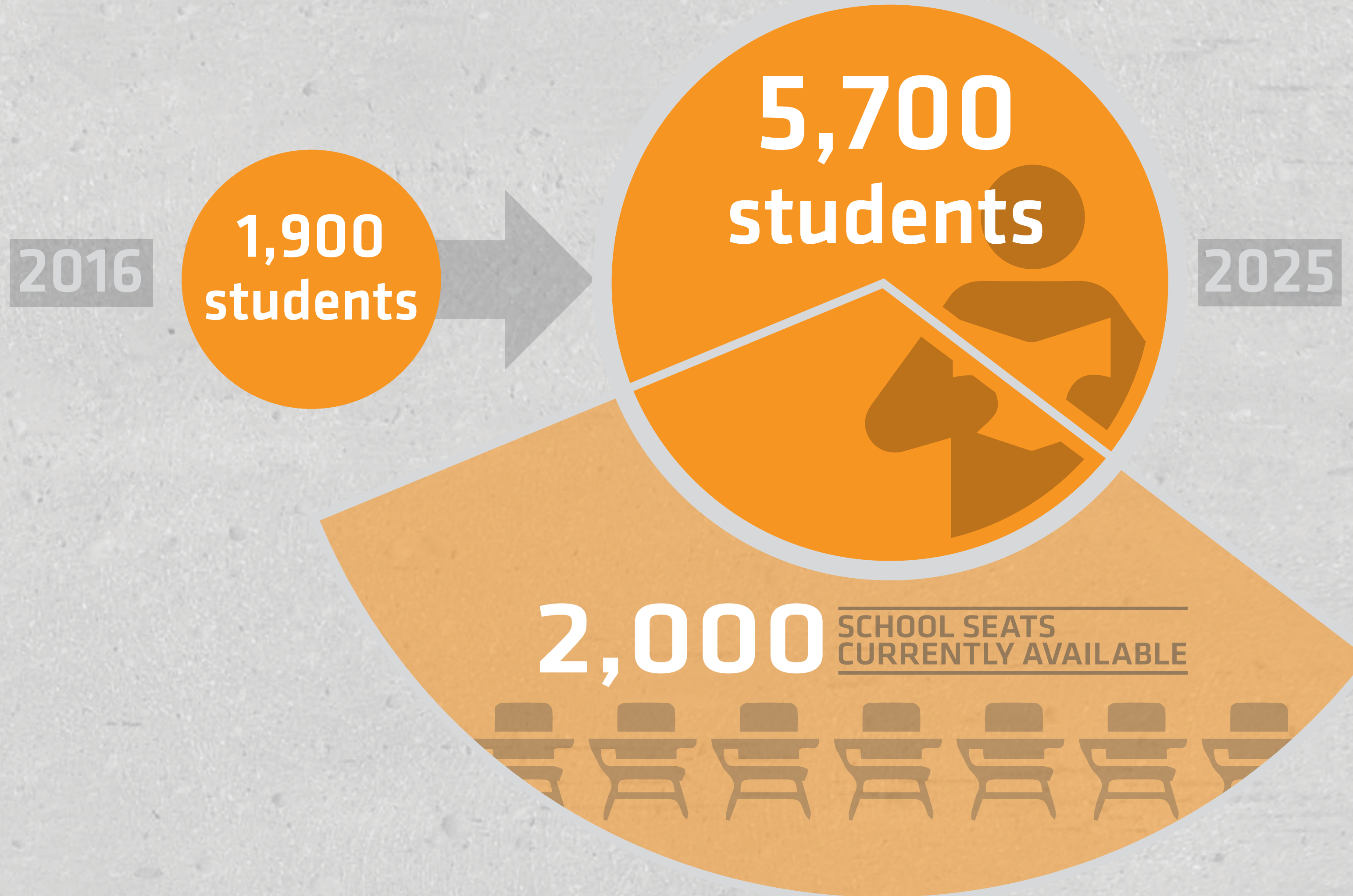


Downtown Brooklyn's hospitals perform far below the NYC average in three major categories.

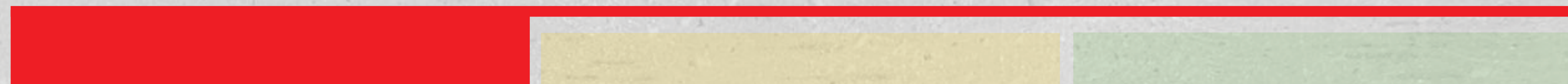


SCHOOL SEAT GROWTH + AVAILABILITY

SCHOOLS



There will be a significant shortfall of available elementary school seats in Downtown Brooklyn.



AVERAGE MAXIMUM DOWNLOAD SPEED

BROADBAND

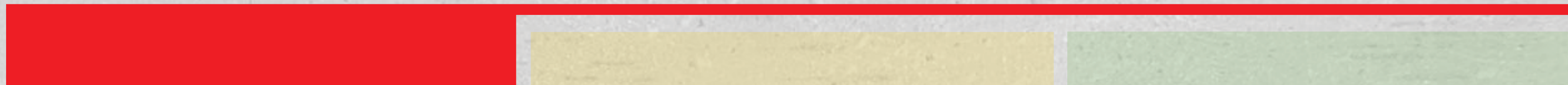
Peer Innovation Cities
1,000 MBps



Downtown Brooklyn
100 MBps



Broadband speed in Downtown Brooklyn and the greater Brooklyn Tech Triangle lags far behind innovation hubs nationwide.



ILLEGAL ON-STREET PARKING

PARKING

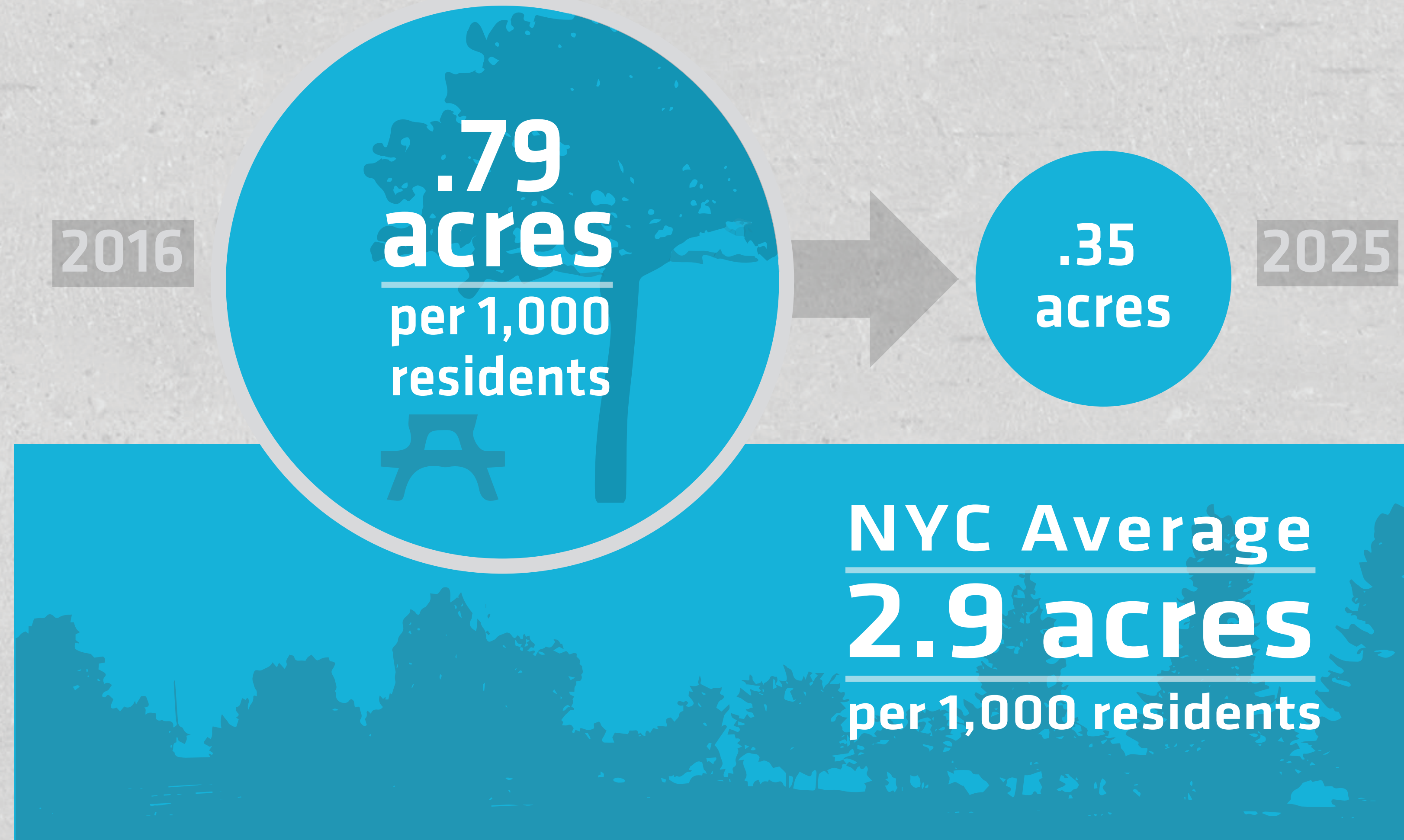


Use of invalid parking placards results in a 30% decrease in available on-street parking.



RESIDENT ACCESS TO PUBLIC SPACE

PUBLIC SPACE



Downtown Brooklyn residents have less access to public space compared to other New Yorkers.



SANITATION

PROJECTED SANITATION GROWTH

2016

12,000
tons



25,000
tons

2025



Resources Needed
+ 6-8 trucks
+ 12-16 drivers



Generated waste will double by 2025 and require more sanitation resources.



AVERAGE EMERGENCY RESPONSE TIMES

EMERGENCY SERVICES



MEDICAL EMERGENCY

9:03	Manhattan
9:05	Brooklyn
9:06	Staten Island
9:40	Bronx
9:52	Queens

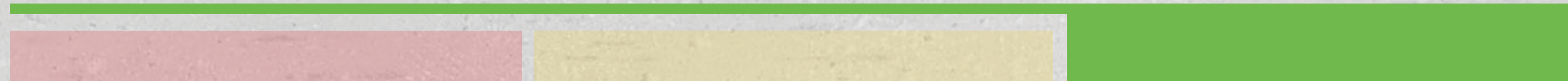


STRUCTURAL FIRE

4:30	Brooklyn
5:03	Staten Island
5:04	Manhattan
5:12	Queens
5:19	Bronx



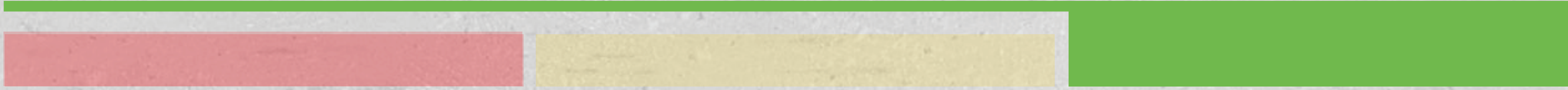
Emergency response times in Brooklyn are equal to or better than the other boroughs.



AVERAGE SPARE CAPACITY ON TRAINS



Trains passing through Downtown Brooklyn have more capacity than those at other locations in the city, even during rush hour.



DOWNTOWN BROOKLYN INFRASTRUCTURE STUDY

REPORT DATE: MARCH 2016

● **INTRO / POPULATION**

U.S. Census; Downtown Brooklyn Partnership; NYC Department of City Planning; NYC Department of Education; National Center for Education Statistics; Integrated Postsecondary Education Data System

● **HOSPITALS**

New York State Department of Health

● **SCHOOLS**

NYC Department of Education; New York City School Construction Authority; Downtown Brooklyn Partnership

● **BROADBAND**

National Telecommunications & Information Administration

● **PARKING**

Transportation Alternatives; Patch.com; NY Daily News; Streetsblog.com; Nielsen Claritas; Downtown Brooklyn Partnership

● **PUBLIC SPACE**

Geospatial Analytics; NYC Department of Parks and Recreation

● **SANITATION**

Downtown Brooklyn Partnership

● **EMERGENCY SERVICES**

NYC Analytics; National Fire Prevention Association

● **TRANSPORTATION**

Metropolitan Transit Authority; Downtown Brooklyn Partnership

SOURCES